

# Sectional Steel Door Systems



Product Line

STEEL DOORS
INSULATED STEEL DOORS

MODELS

416	420	424	430
418	422	426	432



INDUSTRY LEADING  
COMMERCIAL & INDUSTRIAL SOLUTIONS



# Sectional Steel Door Selection – A Solid Choice for Reliability and Durability

## THE TURNKEY SOURCE FOR COMMERCIAL AND INDUSTRIAL SOLUTIONS AND SERVICE

Selection of Overhead Door products automatically includes the unequaled expertise and experience of Overhead Door Distributors. Nationwide coverage by our over 400 Distributors is unique in our industry—providing a single source for design and application consulting, installation, service and ongoing maintenance. Turnkey services to maximize the lasting value of your product choice. Your Overhead Door Distributor is also your only source for a full line of commercial and industrial door and operator systems specifically designed for



integrated applications. For over four generations, our distributors have been committed to providing commercial and industrial door solutions. Combined with Overhead Door product design and manufacturing superiority, our distributors are a proud part of the Overhead Door family, sharing our name, our Ribbon logo and our commitment to industry leading innovation and excellence.

## CONTENTS

Intro to Sectional Steel and Insulated Sectional Steel	2	Extra Heavy-Duty Insulated Sectional Steel Doors—Model 418	8
Sectional Steel and Insulated Sectional Steel Comparison Chart	3–4	Heavy-Duty Insulated Sectional Steel Doors – Models 422 426	9
Extra Heavy-Duty Sectional Steel Doors Models 416	5	Medium-Duty Insulated Sectional Steel Doors – Model 432	10
Heavy-Duty Sectional Steel Doors Models 420 424	6	Track Detail	11
Medium-Duty Sectional Steel Doors Models 430	7	Framing & Pad Detail	12
		Electric Operators	13–14



# Sectional Steel and Insulated Steel Doors

Overhead Door Corporation offers a wide selection of sectional steel and insulated steel doors to satisfy applications where durability, reliability and economy are top priorities. An array of door panel profiles, track and hardware, and specialized options allows you to further customize these doors to your specific project requirements.

## GENERAL FEATURES AND BENEFITS

### Solidly Constructed for Reliable Performance

- 16, 20, or 24-gauge steel door panels result in a solidly constructed door for years of dependable service
- Standard steel doors available in sizes up to 32'2" (9804 mm) in width and 24'1" (7341 mm) in height
- Insulated steel doors available in up to 32'2" (9804 mm) in width and 24'1" (7341 mm) in height
- Heavy-duty track and hardware are fabricated of high-quality galvanized steel and engineered for precise, trouble-free performance
- Flexible PVC bottom weatherseal with retainer lessens conductivity of heat and cold, minimizes air and water penetration, and accommodates irregular floor conditions

- Option of insulated steel doors provides enhanced thermal efficiency and R-values of 7.35 (1.29 W/Msq) \*
- Baked-on, polyester paint finish eliminates field painting and provides long-lasting protection against the elements
- Superior panel strength and well-engineered track design meets wind load requirements and codes

### Specialized Options for Customized Solutions

- Full-section or individual-panel glazing satisfies requirements for external light and visitor identification
- Higher-cycle springs in optional 25k, 50k, 75k or 100k-cycles promote long-life in high-usage applications
- Optional steel strutting provides reinforcement for structural integrity on wider doors
- Other options include: electric and chain hoist operation, aluminum sash sections with choice of DSB, acrylic, polycarbonate, tempered, or wire glazing, as well as movable center posts, 3" (76 mm) track, jamb seals

### Built to Last

- Top-quality materials, excellent field service and optional maintenance program contribute to extended door life, low maintenance costs and maximum productivity

\* R-value is a measure of thermal efficiency. The higher the R-value the greater the insulating properties of the door. Overhead Door Corporation uses a calculated door section R-value for our insulated doors. If a higher R-value is required, ask your Overhead Door Distributor about the Thermacore® Door System.

## Steel Doors Panel Detail

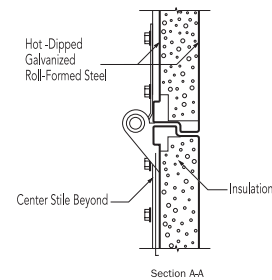
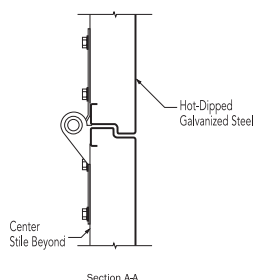
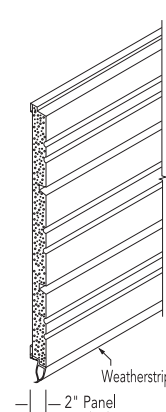
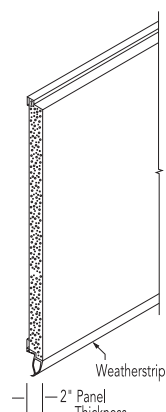
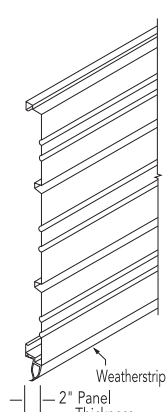
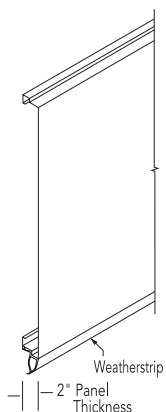
## Insulated Steel Doors Panel Detail

Model 416


Models 420 424 430


Model 418

Models 422 426 432



# Sectional Steel Door Selection Chart

Sectional Steel		GENERAL SPECIFICATIONS								
 <b>MODELS</b>		Nominal Thickness	Maximum Standard Width	Maximum Standard Height	Exterior	Exterior Surface	Exterior Finish	End Stiles	Intermediate Stiles	Lock
Extra Heavy Duty (Pg. 5)	<b>416</b>	2" (51 mm)	32'2" (9804 mm)	21'1" (6426 mm)	16 ga galv. steel	Flush	White baked-on polyester	16 ga galv. steel	16 ga galv. steel	Interior-mounted slide lock
Heavy Duty (Pg. 6)	<b>420</b>	2" (51 mm)	31'2" (9500 mm)	24'1" (7341 mm)	20 ga galv. steel	Ribbed	White baked-on polyester	16 ga galv. steel	16 ga galv. steel	Interior-mounted slide lock
	<b>424</b>	2" (51 mm)	30'2" (9195 mm)	24'1" (7341 mm)	24 ga galv. steel	Ribbed	White baked-on polyester	16 ga galv. steel	16 ga galv. steel	Interior-mounted slide lock
Medium Duty (Pg. 7)	<b>430</b>	2" (51 mm)	20'2" (6147 mm)	16'1" (4902 mm)	Nominal 24 ga galv. steel	Ribbed	White baked-on polyester	16 ga galv. steel	16 ga galv. steel	Interior-mounted slide lock

Sectional Steel		GENERAL SPECIFICATIONS										
 <b>MODELS</b>		Nominal Thickness	Maximum Standard Width	Maximum Standard Height	Exterior Steel	Back Cover	Exterior Surface	Exterior Finish Color	Insulation/R-Value Polystyrene	End Stiles	Intermediate End Stiles	Lock
Extra Heavy Duty (Pg. 8)	<b>418</b>	2" (51 mm)	30'2" (9804 mm)	21'1" (6426 mm)	16 ga galv. steel	26 ga galv. steel	Flush	White baked-on polyester	7.35 (1.29 W/Msq)	16 ga galv. steel	16 ga galv. steel	Interior-mounted slide lock
Heavy Duty (Pg. 9)	<b>422</b>	2" (51 mm)	29'2" (8890 mm)	24'1" (7341 mm)	20 ga galv. steel	26 ga galv. steel	Ribbed	White baked-on polyester	7.35 (1.29 W/Msq)	16 ga galv. steel	16 ga galv. steel	Interior-mounted slide lock
	<b>426</b>	2" (51 mm)	28'2" (8585 mm)	24'1" (7341 mm)	24 ga galv. steel	26 ga galv. steel	Ribbed	White baked-on polyester	7.35 (1.29 W/Msq)	16 ga galv. steel	16 ga galv. steel	Interior-mounted slide lock
Medium Duty (Pg. 10)	<b>432</b>	2" (51 mm)	20'2" (6147 mm)	16'1" (4902 mm)	Nominal 24 ga galv. steel	Polybonded laminate	Ribbed	White baked-on polyester	7.35 (1.29 W/Msq)	16 ga galv. steel	16 ga galv. steel	Interior-mounted slide lock

Information is subject to change. Please call your local Overhead Door distributor for special applications or if your application is not listed.



AVAILABLE OPTIONS															
Electric Operator	Bottom Sensing Edge	Chain Hoist	Pull-Rope Auto Release	Full Sash Section (Glazing Options) 1/8" (3mm) DSB, Insulated	1/8" (3mm) and 1/4" (6mm) acrylic	Individual Lites (Glazing Options) 1/8" (3mm) DSB	1/8" (3mm) and 1/4" (6mm) acrylic	1/8" (3mm) and 1/4" (6mm) polycarbonate	1/8" (3mm) and 1/4" (6mm) Tempered	1/4" (6mm) wired	3" (76 mm) Track	Higher-cycle Springs 25K, 50K, 75K and 100K	Exhaust Ports	Industrial Brown Paint Finish	Five-Pin Tumbler Keyed Lock
•	•	•	•	•	•	•	•	•	•	•	•	•	•	•	•
•	•	•	•	•	•	•	•	•	•	•	•	•	•	•	•
•	•	•	•	•	•	•	•	•	•	•	•	•	•	•	•
•	•	•	•	•	•	•	•	•	•	•	•	•	•	•	•

AVAILABLE OPTIONS															
Electric Operator	Bottom Sensing Edge	Chain Hoist	Pull-Rope Auto Release	Full Sash Section (Glazing Options) 1/8" (3mm) DSB	1/8" (3mm) Insulated	1/8" (3mm) or 1/4" (6 mm) acrylic	Individual Lite (Glazing Options) 1/2" Insulated DSB	3" (76 mm) Track	Bracket Mounting	Higher-cycle Springs 25K, 50K, 75K and 100K	Exhaust Ports	Industrial Brown Paint Finish	Five-Pin Tumbler Keyed Lock		
•	•	•	•	•	•	•	•	•	•	•	•	•	•		
•	•	•	•	•	•	•	•	•	•	•	•	•	•		
•	•	•	•	•	•	•	•	•	•	•	•	•	•		
•	•	•	•	•	•	•	•	•	•	•	•	•	•		



# Extra Heavy-Duty Sectional Steel Doors

## MODEL 416

### Standard Features at a Glance

Nominal thickness	2" (51 mm)
Maximum standard width	32'2" (9804 mm)
Maximum standard height	21'1" (6426 mm)
Exterior steel	16-gauge hot-dipped galvanized steel
Exterior surface	Flush
End stiles	16-gauge steel
Center stiles	16-gauge steel
Standard mounting	Angle mount
Standard track	2" (51 mm)
Standard springs	10,000 cycle
Weatherstripping	Flexible PVC bottom with retainer
Operation	Manual pull rope
Finish	White baked-on polyester
Lock	Interior-mounted slide lock

### Options

- Electric operator or chain hoist
- Bottom sensing edge
- Full sash section with 1/8" (3 mm) DSB, insulated; 1/8" (3 mm) and 1/4" (6 mm) acrylic
- Individual lites with 1/8" (3 mm) DSB; 1/8" (3 mm) and 1/4" (6 mm) acrylic; 1/8" (3 mm) and 1/4" (6 mm) polycarbonate; 1/8" (3 mm) and 1/4" (6 mm) Tempered; 1/4" (6 mm) wired
- 3" (76 mm) track
- Bracket mounting (not available on full vertical door tracks)
- Bottom sensing edge
- Higher-cycle springs in 25k, 50k, 75k, 100k cycles
- Exhaust ports
- Jamb weatherseals
- Bottom strips, including looped PVC weatherstrips, flexible PVC astragal weatherstrips and double-contact weatherstrips
- Reinforcing struts of roll-formed, galvanized steel
- Movable center posts for 2" (51 mm) or 3" (76 mm) tracks that roll away, with automatic safety catches that prevent door closure when posts are removed
- Tumbler keyed lock
- Knock & Lock<sup>®</sup> breakaway door system

Panel Schedule		Section Schedule	
Door Width	Number of Panels	Door Height	Number of Sections
to 10'2" (3099 mm)	2	6'1" to 7'1" (1854 mm to 3937 mm)	4
10'3" to 12'2" (3124 mm to 3708 mm)	3	7'2" to 8'10" (2184 mm to 2692 mm)	5
12'3" to 16'2" (3734 mm to 4928 mm)	4	8'11" to 10'7" (2718 mm to 3226 mm)	6
16'3" to 19'2" (4953 mm to 5842 mm)	5	10'8" to 12'4" (3251 mm to 3759 mm)	7
19'3" to 22'2" (5867 mm to 6756 mm)	6	12'5" to 14'1" (3785 mm to 4293 mm)	8
22'3" to 26'2" (6782 mm to 7976 mm)	8	14'2" to 15'10" (3438 mm to 4826 mm)	9
26'3" to 32'2" (8001 mm to 9804 mm)	10	15'11" to 17'7" (4851 mm to 5359 mm)	10
		17'8" to 19'4" (5385 mm to 6426 mm)	11
		19'5" to 21'1" (5918 mm to 6426 mm)	12



# Heavy-Duty Sectional Steel Doors

MODELS

420 424

## Standard Features at a Glance

Nominal thickness	2" (51 mm)
Maximum standard width	31'2" (9500 mm) (Model 420) 30'2" (9195 mm) (Model 424)
Maximum standard height	24'1" (7341 mm)
Exterior steel	20-gauge galvanized steel (Model 420) 24-gauge galvanized steel (Model 424)
Exterior surface	Ribbed
End stiles	16-gauge steel
Center stiles	16-gauge steel
Standard mounting	Angle mount
Standard track	2" (51 mm)
Standard springs	10,000 cycle
Weatherstripping	Flexible PVC bottom with retainer
Operation	Manual pull rope
Finish	White baked-on polyester
Lock	Interior-mounted slide lock

## Options

- Electric operator or chain hoist
- Bottom sensing edge
- Full sash section with 1/8" (3 mm) DSB, insulated; 1/8" (3 mm) and 1/4" (6 mm) acrylic
- Individual lites with 1/8" (3 mm) DSB; 1/8" (3 mm) and 1/4" (6 mm) acrylic; 1/8" (3 mm) and 1/4" (6 mm) polycarbonate; 1/8" (3 mm) and 1/4" (6 mm) Tempered; 1/4" (6 mm) wired
- 3" (76 mm) track
- Bracket mounting (not available on full vertical)
- Higher-cycle springs in 25k, 50k, 75k, 100k cycles
- Exhaust ports
- Jamb weatherseals
- Bottom strips, including looped PVC weatherstrips, flexible PVC astragal weatherstrips and double-contact weatherstrips
- Reinforcing struts of roll-formed, galvanized steel
- Industrial Brown polyester (Model 424 only)
- Movable center posts for 2" (51 mm) or 3" (76 mm) tracks that roll away, with automatic safety catches that prevent door closure when posts are removed
- Tumbler keyed lock
- Knock & Lock<sup>®</sup> breakaway door system

Models 420 and 424 doors are designed for heavy-duty use in a variety of commercial and industrial applications. Both models feature a 2" (51 mm) panel thickness, 16-gauge steel intermediate and end stiles, ribbed steel exterior and a white paint finish. The Model 420 is a 20-gauge steel door available in sizes up to 31'2" in width and 24'1" in height (9500 mm and 7341 mm). The Model 424 is available in sizes up to 30'2" in width and 24'1" in height (9195 mm and 7341 mm), and is also available in Industrial Brown. Numerous options — including weatherstripping, reinforcing struts, movable center posts, and motor operation — allow these heavy-duty doors to meet nearly any project requirement.

Panel Schedule		Section Schedule	
Door Width	Number of Panels	Door Height	Number of Sections
to 10'2" (3099 mm)	2	to 8'1" (2464 mm)	4
10'3" to 12'2" (3124 mm to 3708 mm)	3	8'2" to 10'1" (2489 mm to 3073 mm)	5
12'3" to 16'2" (3734 mm to 4928 mm)	4	10'2" to 12'1" (3099 mm to 3683 mm)	6
16'3" to 19'2" (4953 mm to 5842 mm)	5	12'2" to 14'1" (3708 mm to 4293 mm)	7
19'3" to 22'2" (5867 mm to 6756 mm)	6	14'2" to 16'1" (4318 mm to 4902 mm)	8
22'3" to 26'2" (6782 mm to 7976 mm)	8	16'2" to 18'1" (4928 mm to 5512 mm)	9
26'3" to 31'2"* (8001 mm to 9804 mm)	10	18'2" to 20'1" (5537 mm to 6121 mm)	10
26'3" to 30'2"*** (8001 mm to 9195 mm)	10	20'2" to 22'1" (6147 mm to 6731 mm)	11
		22'2" to 24'1"*** (6756 mm to 7341 mm)	12

\*Model 420 \*\*Model 424

# Medium-Duty Sectional Steel Doors

## MODEL 430

### Standard Features at a Glance

Nominal thickness	2" (51 mm)
Maximum standard width	20'2" (6147 mm)
Maximum standard height	16'1" (4902 mm)
Exterior steel	Nominal 24-gauge galvanized steel
Exterior surface	Ribbed
End stiles	16-gauge steel
Center stiles	16-gauge steel
Standard mounting	Angle mount
Standard track	2" (51 mm)
Standard springs	10,000 cycle
Weatherstripping	Standard on bottom
Operation	Manual pull rope
Finish	White baked-on polyester
Lock	Interior-mounted slide lock

### Options

- Electric operator or chain hoist
- Full sash section with 1/8" (3 mm) DSB, insulated; 1/8" (3 mm) and 1/4" (6 mm) acrylic
- Individual lites with 1/8" (3 mm) DSB; 1/8" (3 mm) and 1/4" (6 mm) acrylic; 1/8" (3 mm) and 1/4" (6 mm) polycarbonate; 1/8" (3 mm) and 1/4" (6 mm) Tempered; 1/4" (6 mm) wired
- Industrial Brown polyester
- 3" (76 mm) track
- Bracket mounting (not available on full vertical)
- Bottom sensing edge
- Higher-cycle springs in 25k, 50k, 75k, 100k cycles
- Exhaust ports
- Jamb weatherseals
- Bottom strips, including looped PVC weatherstrips, flexible PVC astragal weatherstrips and double-contact weatherstrips
- Reinforcing struts of roll-formed, galvanized steel
- Movable center posts for 2" (51 mm) or 3" (76 mm) tracks that roll away, with automatic safety catches that prevent door closure when posts are removed
- Tumbler keyed lock
- Knock & Lock<sup>®</sup> breakaway door system

The Model 430 sectional steel door is available in sizes up to 20'2" in width and 16'1" in height (6147 mm and 4902 mm) for a variety of medium-duty applications. These doors feature a 2" (51 mm) panel thickness and a nominal 24-gauge, ribbed, white galvanized steel exterior with 16-gauge steel intermediate and end stiles. (Industrial Brown is available) The Model 430 is customizable to any project specification with a variety of additionally available options.

Panel Schedule		Section Schedule	
Door Width	Number of Panels	Door Height	Number of Sections
8'0" to 10'2" (2438 mm to 3099 mm)	2	to 8'1" (2464 mm)	4
10'3" to 12'2" (3124 mm to 3708 mm)	3	8'2" to 10'1" (2489 mm to 3073 mm)	5
12'3" to 16'2" (3734 mm to 4928 mm)	4	10'2" to 12'1" (3099 mm to 3683 mm)	6
16'3" to 19'2" (4953 mm to 5842 mm)	5	12'2" to 14'1" (3708 mm to 4293 mm)	7
19'3" to 20'2" (5867 mm to 6147 mm)	6	14'2" to 16'1" (4318 mm to 4902 mm)	8





# Extra Heavy-Duty Insulated Sectional Steel Doors

## MODEL 418

### Standard Features at a Glance

Nominal thickness	2" (51 mm)
Maximum standard width	30'2" (9144 mm)
Maximum standard height	21'1" (6426 mm)
Exterior steel	16-gauge galvanized steel
Back cover	26-gauge galvanized steel (poly-bonded laminate, high impact polystyrene (HIPS)-backed optional)
Insulation	Expanded polystyrene (standard)
R-value*	
Polystyrene	7.35 (1.29 W/Msq)
Exterior surface	Flush
End stiles	16-gauge steel
Center stiles	16-gauge steel
Standard mounting	Angle mount
Standard track	2" (51 mm)
Standard springs	10,000 cycle
Weatherstripping	Standard on bottom
Operation	Manual pull rope
Finish	White baked-on polyester
Lock	Interior-mounted slide lock

### Options

- Electric operator or chain hoist
- Bottom sensing edge
- Full sash section with 1/8" (3 mm) DSB; insulated; 1/8" (3 mm) and 1/4" (6 mm) acrylic
- Individual lites with 1/2" insulated DSB
- 3" (76 mm) track
- Bracket mounting (not available on full vertical (door tracks))
- Higher-cycle springs in 25k, 50k, 75k, 100k cycles
- Exhaust ports
- Jamb weatherseals
- Bottom strips, including looped PVC weatherstrips, flexible PVC astragal weatherstrips and double-contact weatherstrips
- Reinforcing struts of roll-formed, galvanized steel
- Movable center posts for 2" (51 mm) or 3" (76 mm) tracks that roll away, with automatic safety catches that prevent door closure when posts are removed
- Tumbler keyed lock
- Knock & Lock<sup>®</sup> breakaway door system

The Model 418 is a high-quality, heavy-duty insulated door that provides protection against heat and cold environments. Fabricated of 16-gauge, flush galvanized steel exterior and 26-gauge steel back cover, these 2" (51 mm) thick doors offer an R-value\* of 7.35 (1.29 W/Msq). A wide array of options allow these doors to meet the most stringent project requirements that call for a degree of thermal efficiency.

Panel Schedule		Section Schedule	
Door Width	Number of Panels	Door Height	Number of Sections
to 10'2" (3099 mm)	2	6'1" to 7'1" (1854 mm to 2159 mm)	4
10'3" to 12'2" (3124 mm to 3708 mm)	3	7'2" to 8'10" (2184 mm to 2692 mm)	5
12'3" to 16'2" (3734 mm to 4928 mm)	4	8'11" to 10'7" (2718 mm to 3226 mm)	6
16'3" to 19'2" (4953 mm to 5842 mm)	5	10'8" to 12'4" (3251 mm to 3759 mm)	7
19'3" to 22'2" (5867 mm to 6756 mm)	6	12'5" to 14'1" (3785 mm to 4293 mm)	8
22'3" to 26'2" (6782 mm to 7976 mm)	8	14'2" to 15'10" (4318 mm to 4826 mm)	9
26'3" to 32'2" (8001 mm to 9804 mm)	10	15'11" to 17'7" (4851 mm to 5359 mm)	10
		17'8" to 19'4" (5385 mm to 5893 mm)	11
		19'5" to 21'1" (5918 mm to 6426 mm)	12

\* R-value is a measure of thermal efficiency. The higher the R-value the greater the insulating properties of the door. Overhead Door Corporation uses a calculated door section R-value for our insulated doors.



# Heavy-Duty Insulated Sectional Steel Doors

## MODELS 422 426

### Standard Features at a Glance

Nominal thickness	2" (51 mm)
Maximum standard width	29'2" (8890 mm) (422 Series) 28'2" (8585 mm) (426 Series)
Maximum standard height	24'1" (7341 mm)
Exterior steel	20-gauge galvanized steel (422 Series) 24-gauge galvanized steel (426 Series)
Back cover	26-gauge galvanized steel (poly-bonded laminate, high impact polystyrene (HIPS)-backed optional)
Insulation	Expanded polystyrene (standard)
R-value*	
Polystyrene	7.35 (1.29 W/Msq)
Exterior surface	Ribbed
End stiles	16-gauge steel
Center stiles	16-gauge steel
Standard mounting	Angle mount
Standard track	2" (51 mm)
Standard springs	10,000 cycle
Weatherstripping	Standard on bottom
Operation	Manual pull rope
Finish	White baked-on polyester
Lock	Interior-mounted slide lock

### Options

- Electric operator or chain hoist
- Bottom sensing edge
- Full sash section with 1/8" (3 mm) DSB; 1/8" (3 mm) insulated; 1/8" (3 mm) and 1/4" (6 mm) acrylic
- Individual lites with 1/2" insulated DSB
- Industrial Brown polyester (Model 426 only)
- 3" (76 mm) track
- Bracket mounting (not available on full vertical)
- Higher-cycle springs in 25k, 50k, 75k, 100k cycles
- Exhaust ports
- Jamb weatherseals
- Bottom strips, including looped PVC weatherstrips, flexible PVC astragal weatherstrips and double-contact weatherstrips
- Reinforcing struts of roll-formed, galvanized steel
- Movable center posts for 2" (51 mm) or 3" (76 mm) tracks that roll away, with automatic safety catches that prevent door closure when posts are removed
- Tumbler keyed lock
- Knock & Lock<sup>®</sup> breakaway door system

The Models 422 and 426 doors are ideal for heavy-duty applications requiring protection against the elements. These doors feature a 2" (51 mm) panel thickness, 16-gauge steel intermediate and end stiles, ribbed steel exterior and 26-gauge steel back cover in a white finish. Polystyrene insulation (R-value\* of 7.35 or 1.29 W/Msq) is standard. The Model 422 is a 20-gauge steel door available in sizes up to 29'2" in width and 24'1" in height (8890 mm and 7341 mm). The Model 426 is available in sizes up to 28'2" in width and 24'1" in height (8585 mm and 7341 mm), and is also offered in Industrial Brown. A multitude of options — including reinforcing struts, movable center posts, and motor operation — allow these insulated heavy-duty doors to be used in a variety of commercial and industrial environments.

Panel Schedule		Section Schedule	
Door Width	Number of Panels	Door Height	Number of Sections
to 10'2" (3099 mm)	2	to 8'1" (2464 mm)	4
10'3" to 12'2" (3124 mm to 3708 mm)	3	8'2" to 10'1" (2489 mm to 3073 mm)	5
12'3" to 16'2" (3734 mm to 4928 mm)	4	10'2" to 12'1" (3099 mm to 3683 mm)	6
16'3" to 19'2" (4953 mm to 5842 mm)	5	12'2" to 14'1" (3708 mm to 4293 mm)	7
19'3" to 22'2" (5867 mm to 6756 mm)	6	14'2" to 16'1" (4318 mm to 4902 mm)	8
22'3" to 26'2" (6782 mm to 7976 mm)	8	16'2" to 18'1" (4928 mm to 5512 mm)	9
26'3" to 29'2" <sup>†</sup> (8001 mm to 8890 mm)	10	18'2" to 20'1" (5537 mm to 6121 mm)	10
26'3" to 28'2" <sup>††</sup> (8001 mm to 8534 mm)	10	20'2" to 22'1" (6147 mm to 6731 mm)	11
		22'2" to 24'1" (6756 mm to 7341 mm)	12

<sup>†</sup> Model 422

<sup>††</sup> Model 426

\* R-value is a measure of thermal efficiency. The higher the R-value the greater the insulating properties of the door. Overhead Door Corporation uses a calculated door section R-value for our insulated doors.

# Medium-Duty Sectional Insulated Steel Doors

## MODEL 432

### Standard Features at a Glance

Nominal thickness	2" (51 mm)
Maximum standard width	20'2" (6147 mm)
Maximum standard height	16'1" (4902 mm)
Exterior steel	nominal 24-gauge galvanized steel
Back cover	26-gauge galvanized steel (poly-bonded laminate, high impact polystyrene (HIPS)-backed optional)
Insulation	Expanded polystyrene (standard)
R-value*	
Polystyrene	7.35 (1.29 W/Msq)
Exterior surface	Ribbed
End stiles	16-gauge steel
Center stiles	16-gauge steel
Standard mounting	Angle mount
Standard track	2" (51 mm)
Standard springs	10,000 cycle
Weatherstripping	Standard on bottom
Operation	Manual pull rope
Finish	White baked-on polyester
Lock	Interior-mounted slide lock

### Options

- Electric operator or chain hoist
- Full sash section with 1/8" (3 mm) DSB; 1/8" (3 mm) insulated; 1/8" (3 mm) and 1/4" (6 mm) acrylic
- Individual lites with 1/2" insulated DSB
- Industrial Brown polyester paint
- 3" (76 mm) track
- Bracket mounting (not available on full vertical door tracks)
- Bottom sensing edge
- Higher-cycle springs in 25k, 50k, 75k, 100k cycles
- Exhaust ports
- Jamb weatherseals
- Bottom strips, including looped PVC weatherstrips, flexible PVC astragal weatherstrips and double-contact weatherstrips
- Reinforcing struts of roll-formed, galvanized steel
- Movable center posts for 2" (51 mm) or 3" (76 mm) tracks that roll away, with automatic safety catches that prevent door closure when posts are removed
- Tumbler keyed lock
- Knock & Lock<sup>®</sup> breakaway door system

The Model 432 doors offer a 2" (51 mm) panel thickness, a nominal 24-gauge ribbed galvanized steel exterior, and a polybonded back cover. Polystyrene insulation provides an R-value\* of 7.35 (1.29 W/Msq). A variety of options make this door an economical solution for applications requiring a medium-duty insulated steel door.

Panel Schedule		Section Schedule	
Door Width	Number of Panels	Door Height	Number of Sections
8'0" to 10'2" (2438 mm to 3099 mm)	2	to 8'1" (2464 mm)	4
10'3" to 12'2" (3124 mm to 3708 mm)	3	8'2" to 10'1" (2489 mm to 3073 mm)	5
12'3" to 16'2" (3734 mm to 4928 mm)	4	10'2" to 12'1" (3099 mm to 3683 mm)	6
16'3" to 19'2" (4953 mm to 5842 mm)	5	12'2" to 14'1" (3708 mm to 4293 mm)	7
19'3" to 20'2" (5867 mm to 6147 mm)	6	14'2" to 16'1" (4318 mm to 4902 mm)	8

\* R-value is a measure of thermal efficiency. The higher the R-value the greater the insulating properties of the door. Overhead Door Corporation uses a calculated door section R-value for our insulated doors.

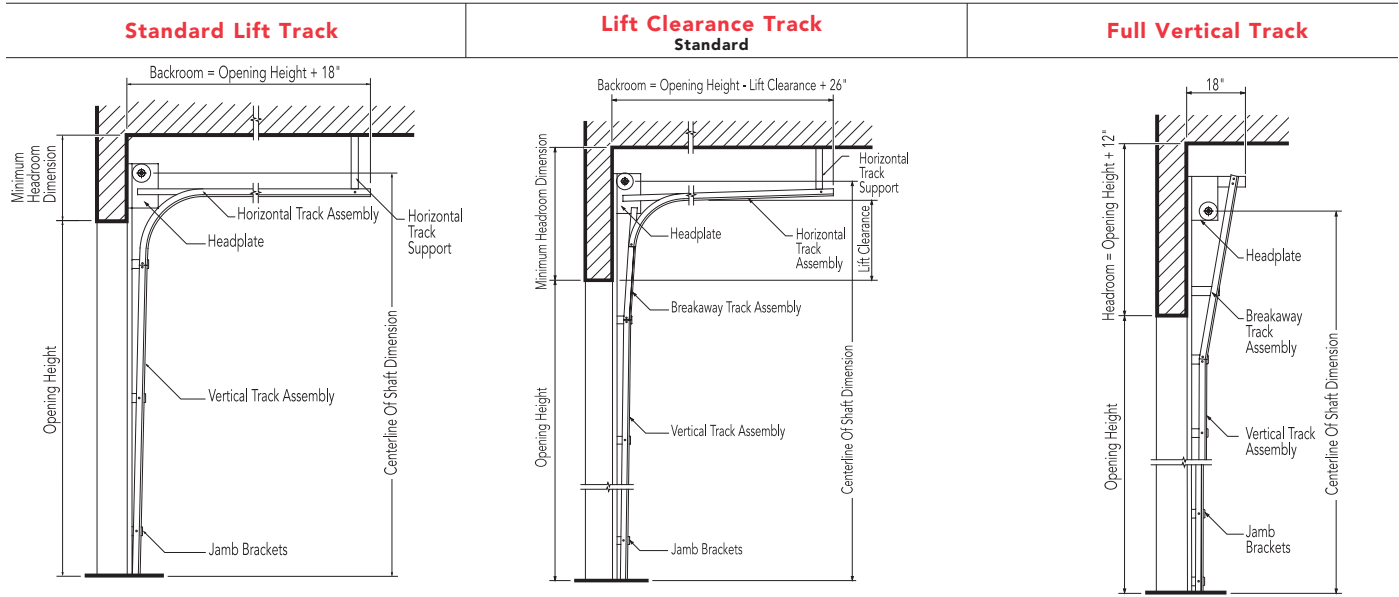




# Track Detail

Any of the following track configurations can be selected for all Sectional Steel Models.

O.H.=Opening Height L.C.=Lift Clearance D.H.=Door Height

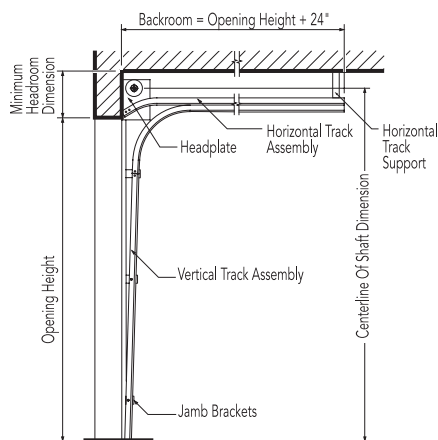


<b>2" (51 mm) Track</b> [15" (381 mm) Radius]		
Door Height	Centerline of Shaft	Minimum Headroom
Thru 12'0" (3658 mm)	O.H. + 11 5/8" (295 mm)	14 1/4" (362 mm)
Thru 16'0" (4877 mm)	O.H. + 12 5/8" (321 mm)	20 1/2" (521 mm)
<b>3" (76 mm) Track</b> [15" (381 mm) Radius]		
Thru 18'0" (5486 mm)	O.H. + 14 5/8" (372 mm)	18" (457 mm)
Thru 32'0" (9754 mm)	O.H. + 16 7/8" (429 mm)	21 1/2" (546 mm)

<b>2" (51 mm) Track</b> [15" (381 mm) Radius]		
Door Height	Centerline of Shaft	Minimum Headroom
Thru 12'0" (3658 mm)	O.H.+L.C.+5 5/8" (143 mm)	L.C.+ 8 3/4" (222 mm)
Thru 16'0" (4877 mm)	O.H.+L.C.+5 5/8" (143 mm)	L.C.+11 1/4" (286 mm)
<b>3" (76 mm) Track</b> [15" (381 mm) Radius]		
Thru 22'0" (6706 mm)	O.H.+L.C.+6 5/8" (168 mm)	L.C.+11 1/2" (292 mm)
Thru 32'0" (9754 mm)	O.H.+L.C.+6 5/8" (168 mm)	L.C.+12 1/4" (311 mm)

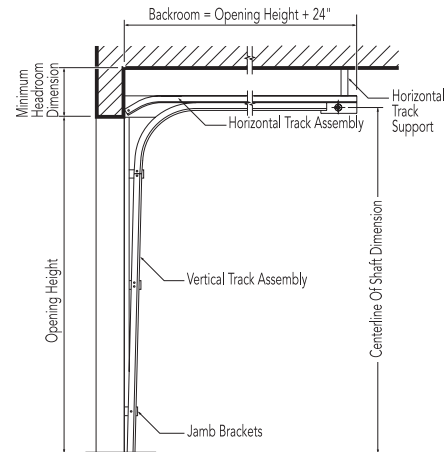
<b>2" (51 mm) Track</b>		
Door Height	Centerline of Shaft	Minimum Headroom
Thru 11'0" (3353 mm)	O.H.+O.H.+3/8" (10 mm)	O.H.+10 1/4" (260 mm)
Thru 16'0" (4877 mm)	O.H.+O.H.+3/8" (10 mm)	O.H.+10 1/4" (260 mm)
<b>3" (76 mm) Track</b>		
Thru 18'0" (5486 mm)	O.H.+O.H.+3/8" (10 mm)	O.H.+10 1/4" (260 mm)

**Low Headroom Track**  
Springs to Front



<b>2" (51 mm) Track</b> [15" (381 mm) Radius]		
Door Height	Centerline of Shaft	Minimum Headroom
Thru 12'0" (3658 mm)	D.H. + 8" (203 mm)	11 3/4" (299 mm)
Thru 16'0" (4877 mm)	D.H. + 8" (203 mm)	12 1/2" (318 mm)
<b>3" (76 mm) Track</b> [15" (381 mm) Radius]		
Thru 12'0" (3658 mm)	D.H. + 9" (229 mm)	13" (330 mm)
Thru 18'0" (5486 mm)	D.H. + 9" (229 mm)	13 3/4" (349 mm)

**Low Headroom Track**  
Springs to Rear

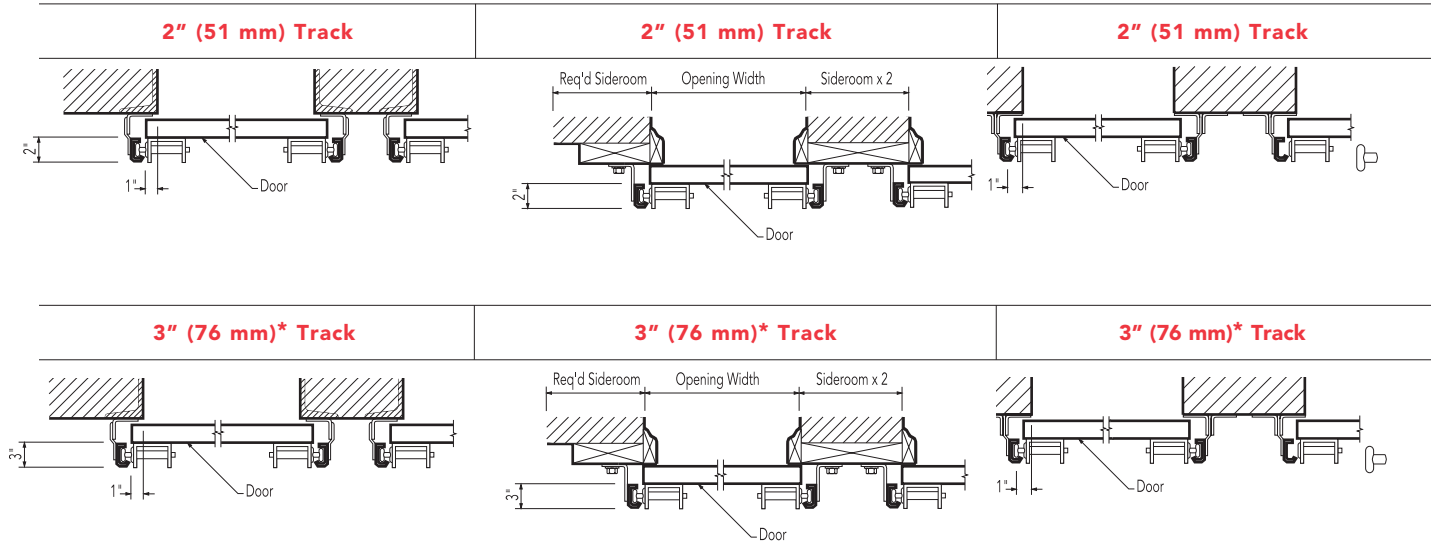
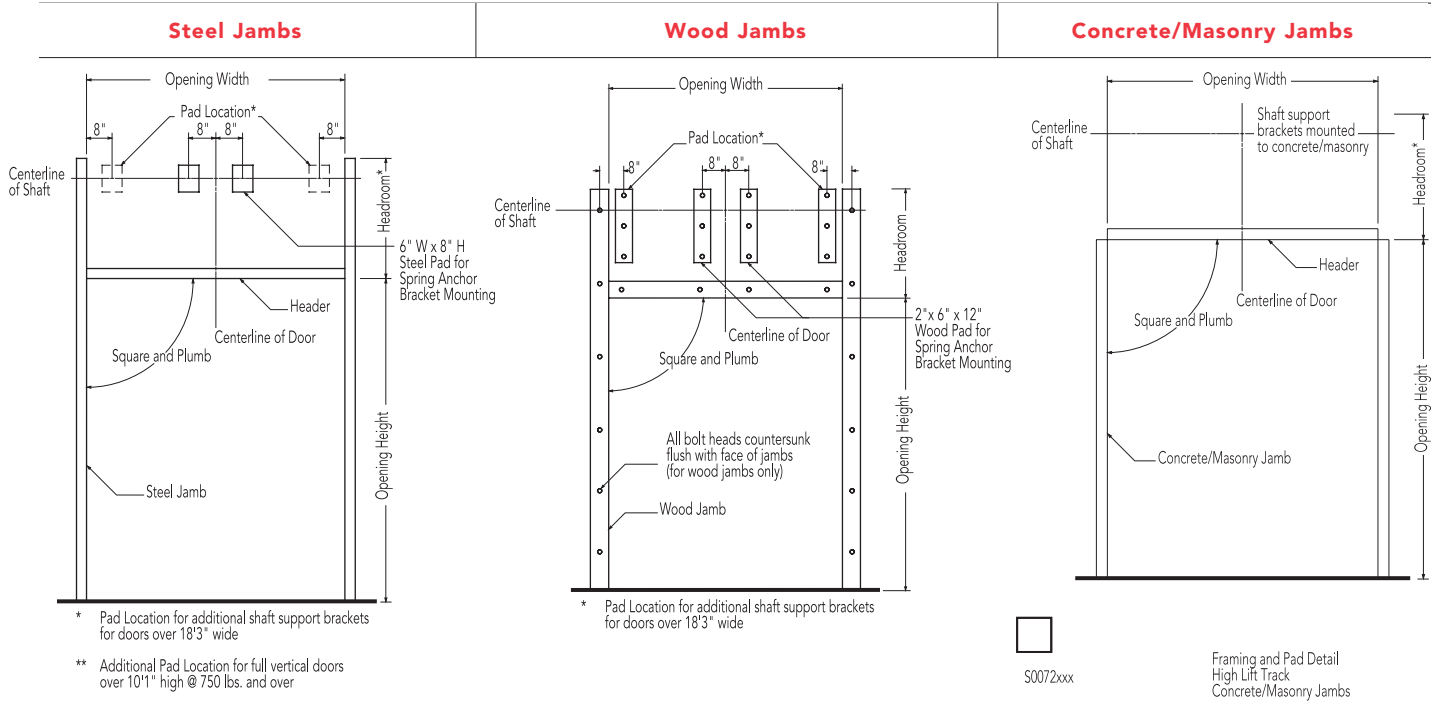


<b>2" (51 mm) Track</b> [15" (381 mm) Radius]		
Door Height	Centerline of Shaft	Minimum Headroom
Thru 12'0" (3658 mm)	O.H. + 2" (51 mm)	7 1/2" (191 mm)
Thru 16'0" (4866 mm)	O.H. + 2" (51 mm)	8" (203 mm)
<b>3" (76 mm) Track</b> [15" (381 mm) Radius]		
Thru 18'0" (5486 mm)	O.H.+6 3/4" (171 mm)	9 3/4" (248 mm)

Additional headroom required for drawbar operation.  
Consult your local Overhead Door Distributor.



Framing and pad details for common installation of Sectional Steel and Insulated Steel Doors in steel, wood, concrete and masonry jambs are provided here. If you require additional information or have special project requirements, refer to the Overhead Door Architectural Design Manual, visit [www.OverheadDoor.com/ADM/base.html](http://www.OverheadDoor.com/ADM/base.html) or consult with your local Overhead Door Distributor.



Minimum Required Sideroom		
Track Type	2" Track (51 mm)	3" Track (76 mm)*
Standard Lift	4 1/2" (114 mm)	6 1/2" (165 mm)
Low Headroom	9" (229 mm)	10" (254 mm)
Lift Clearance	4 1/2" (114 mm)	6 1/2" (165 mm)
Full Vertical	4 1/2" (114 mm)	6 1/2" (165 mm)

Minimum Required Sideroom		
Track Type	2" Track (51 mm)	3" Track (76 mm)*
Standard Lift	3 1/2" (89 mm)	5 1/2" (140 mm)
Low Headroom	8" (203 mm)	9" (229 mm)
Lift Clearance	3 1/2" (89 mm)	5 1/2" (140 mm)
Full Vertical	3 1/2" (89 mm)	5 1/2" (140 mm)

Minimum Required Sideroom		
Track Type	2" Track (51 mm)	3" Track (76 mm)*
Standard Lift	4 1/2" (114 mm)	6 1/2" (165 mm)
Low Headroom	9" (229 mm)	10" (254 mm)
Lift Clearance	4 1/2" (114 mm)	5 1/2" (140 mm)
Full Vertical	4 1/2" (114 mm)	5 1/2" (140 mm)

## Operator Control Options

- Push-button, key or combination stations; surface or flush-mounted for interior and/or exterior locations
- Vehicle detectors, key card reader, photocell and door timer controls
- Treadle or pull switch stations
- Telephone entry and coded keyboard stations
- Universal programmable door timer
- Commercial light package
- Radio control systems (24 V AC or 120 V AC)
- Explosion and dust ignition-proof systems

## Electric Operator Selection Guide

	Horsepower/ Newtons	Max. height of door	Max. weight of door	SuperBelt™/Polybelt	Worm gear	Adjustable clutch	Totally enclosed	Continuous duty	Explosion proof	Mounting type
<b>RHX®</b>	1/2 HP, 3/4 HP 1 HP, 3 HP	24' (7315 mm)	3996 lbs (1676 kg)		•	•		•	•	T, S, C
<b>RSX®</b>	1/2 HP, 3/4 HP 1 HP	24' (7315 mm)	1620 (735 kg)	•		•	•	•		T, S, C
<b>RMX®</b>	1/2 HP	14' (4267 mm)	620 (281 kg)	•						T, S

Mounting Options: T=Trolley S=Side mount C= Center mount

## Safety Recommendations

Overhead Door Corporation strongly recommends the use of a primary safety device as defined by UL325 2010. A primary safety device can be approved monitored photo-eyes or an approved monitored sensing edge. If a primary safety device is not installed, a constant contact control switch must be used to close the door. Contact Overhead Door for more information.

### Model RHX®

Model RHX® is a heavy duty commercial operator designed to operate doors up to 24' (7315 mm) in height and 3696 pounds (1676 kg). Available as either a trolley, sidemount or centermount.



Overhead Door Corporation offers the broadest line of electric operators to suit new construction and retrofit applications, as well as unusual or special requirements. Manufactured by Overhead Door Corporation to meet the exacting performance requirements of Overhead Door's upward-acting doors, our ribbon branded operators afford precise control of door action for years of trouble-free operation.

In order to improve safety and enhance door and motor life, industry quality assurance guidelines recommend the choice of a single manufacturer for both door and operator applications. Overhead Door Corporation is the only national manufacturer of a full line of commercial and industrial doors and operators specifically designed for integral applications.

## Operator Models

### Model RMX®

Model RMX® is our advanced medium-duty operator. It is designed for quicker installation and hassle-free operation and operates doors up to 14' (4267 mm) in height and 620 pounds (282 kg). It is available as a trolley-type or side-mounted unit.



### Model RSX®

Model RSX® is a standard duty commercial operator designed to operate doors up to 24' (7315 mm) in height and 1620 pounds (735 kg). It offers unique features like LimitLock®, SuperBelt® & 16 digit menu setup.



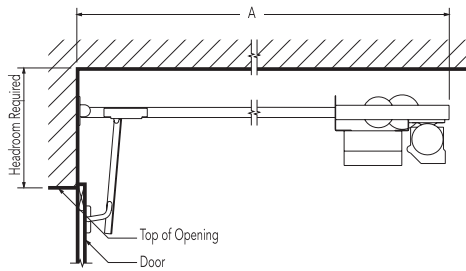




## Mounting Details

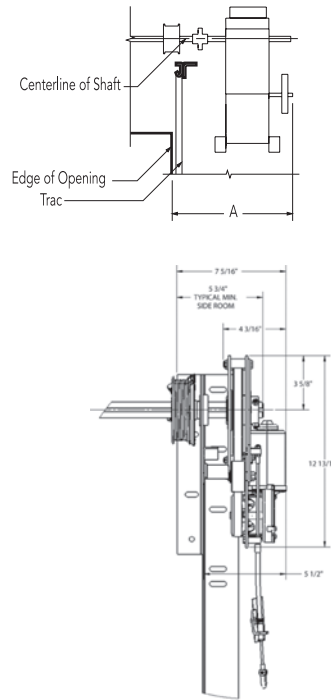
### Trolley-type (Drawbar) RMX®, RSX®, RHX®

Trolley-type (Drawbar) operators feature a power unit mounted between, above and to the rear of the horizontal tracks. The drawbar drive provides positive control of the door at all times, making this operator the preferred choice whenever possible. Maximum door width is 20' per drawbar. Door width over 20' requires dual drawbar installation. Available on Models RMX®, RSX® and RHX®.



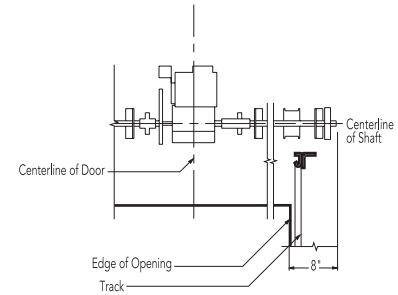
### Side Mount Type (Jackshaft) RMX®, RSX®, RDX®

Side-mounted (Jackshaft) RMX®, RSX®, and RHX® operators feature a power unit mounted on the inside front wall and connected to the crosshead shaft, with an adjustable coupling or drive chain and sprockets.



### Center Mount Type (Jackshaft) RMX®

Center-mounted (Jackshaft) operators feature a power unit on the front wall above the door opening. No additional backroom is required. Available on models RSX® and RMX®.



Minimum Headroom Requirements	
RMX	Track Requirements +4 1/2" (114 mm)
RSX	Track Requirements +5" (127 mm)
RHX	Track Requirements +5" (127 mm)

Depth Requirements - "A" Dimension (Backroom)	
RMX	Door Height +4' 0" (1219 mm)
RSX	Door Height +4' 0" (1219 mm)
RHX	Door Height +4' 10" (1219 mm)

"A" Dimension - Minimum (Sideroom)		
	2" Track (51 mm)	3" Track (76 mm)*
RMX	18 1/2" (470 mm)	19 1/2" (495 mm)
RSX	21" (533 mm)	22" (559 mm)
RHX	21" (533 mm)	22" (559 mm)

Minimum Headroom Requirements	
RSX	Track Requirements +14" (356 mm)
RHX	Track Requirements +23 5/8" (600 mm)

---

## The Original, Innovative Choice for Unequaled Quality and Service

---

Overhead Door Corporation pioneered the upward-acting door industry, inventing the first upward-acting door in 1921 and the first electric door operator in 1926. Today, we continue to be the industry leader through the strength of our product innovation, superior craftsmanship and outstanding customer support, underscoring a legacy of quality, expertise and integrity. That's why design and construction professionals specify Overhead Door Corporation products more often than any other brand.

The Overhead Door Red Ribbon is a mark of quality that also reflects the pride we take in the people who support our products. Our family of over 400 Overhead Door Distributors across the country not only share our name and logo, but also our commitment to excellence. Your Overhead Door Distributor will work with you in a consultative role to ensure that product selections achieve your design and application requirements — in addition to offering expert installation, professional field service and ongoing maintenance. From project design and manufacturing to installation and service, the Overhead Door Red Ribbon is your guarantee of genuine quality and turnkey service excellence.

**Together with our distributors, we offer comprehensive technical information and resource materials to support your project, including:**

- Architectural Design Manual – a comprehensive guide to selecting, specifying and detailing all commercial and industrial Overhead Door products can be found at [www.OverheadDoor.com/ADM/base.html](http://www.OverheadDoor.com/ADM/base.html)
- Operation & Maintenance Manual – detailed product information, customized for your project, to ensure reliable, long-life door system operation
- Custom application and technical assistance through ordering plants' customer service and technical services respectively
- Visit our Architect's Corner at [www.OverheadDoor.com](http://www.OverheadDoor.com)



Advanced Rolling Steel Door  
RapidSlat®



Thermacore® Sectional Doors



Rolling & Side Folding  
Security Grilles & Closures



Rolling Service Doors



Commercial Operators

Today, Overhead Door Corporation – along with our Horton Automatics division, for automated pedestrian entrances – is recognized as the leading, single-source manufacturer of integrated door and operator systems for commercial, industrial and residential applications. With multiple manufacturing locations throughout the United States, a state-of-the-art TREQ (Testing, Reliability, Engineering, and Quality) Center for design and engineering, and a national network of authorized Overhead Door Distributors, our capabilities are leading-edge and our field service and technical support second to none. Built best and backed best, Overhead Door is the industry's leading choice for quality that shows and lasts.

**To talk with the Overhead Door Distributor nearest you, call 1-800-929-DOOR.**

### Overhead Door Corporation

2501 S. State Hwy. 121 Bus., Suite 200

Lewisville, Texas 75067

1-800-929-DOOR

[www.OverheadDoor.com](http://www.OverheadDoor.com)



INDUSTRY LEADING  
COMMERCIAL & INDUSTRIAL SOLUTIONS

The Overhead Door Corporation family of quality commercial and industrial products includes:



A part of Sanwa Holdings Corporation